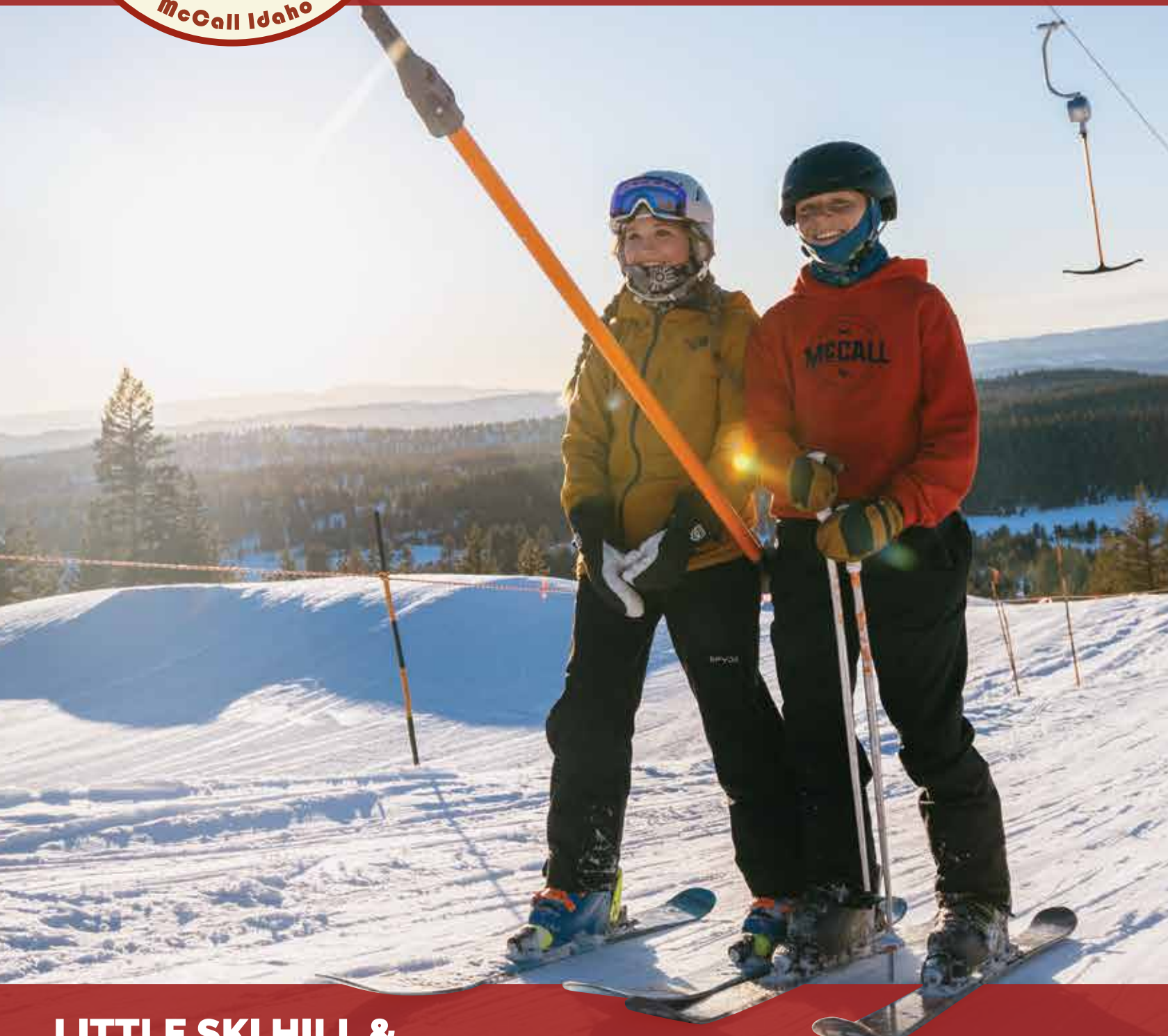




ANNUAL REPORT

2020-2021



**LITTLE SKI HILL &
BEAR BASIN NORDIC CENTER**



2020/2021 YEAR IN REVIEW

Reporting numbers from 7/1/20 - 6/30/21

PLSC adopted NSAA's Ski Well, Be Well Covid-19 operational plans.

18,000 SKIER VISITS

1 NEW LIFT INSTALLED

30 NEW LIGHTS INSTALLED

189 AFTER SCHOOL PROGRAM PARTICIPANTS

7 GOLDEN SKI SOCIETY MEMBERS

18 BUSINESS SPONSORSHIPS



2020/2021 PASS SALES

Season Passes include access to the Little Ski Hill & Bear Basin Nordic Center.

DAY PASSES SOLD

950 LSH KID **1300** LSH ADULT **2600** BEAR BASIN

SEASON PASSES SOLD

160 DOG **20** COLLEGE **170** KID **520** ADULT **130** FAMILY



2020 SNOW BALL

Online Event ran from November 26 - December 13, 2020

\$25,000 RAISED

54 BUSINESSES DONATED TO AUCTION

87 UNIQUE SUPPORTERS CONTRIBUTED DURING ONLINE EVENT



2021 TOWN RACE LEAGUE:

A race league for everyone. Thursday nights in February & early March.

5 WEEKS **46** RACERS

8 TEAMS **5-71** AGES

WINNERS:

1ST TAMAHAWKS

2ND LAKE FORK BUILDERS

3RD MCCALL WINTER SPORTS CLUB

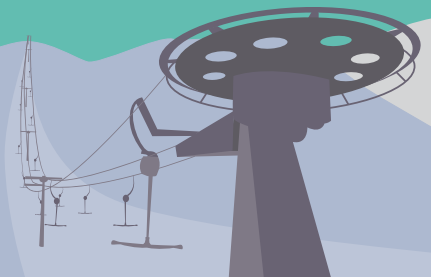


2021 IDAHO GIVES

Statewide online fundraising event.

64 DONORS FOR IDAHO GIVES (APRIL 29 - MAY 7, 2021)

\$8,265.00 RAISED FOR 2020 ASP SCHOLARSHIPS





LETTER FROM THE EXECUTIVE DIRECTOR,

Colby Nielsen

PLSC EXECUTIVE STAFF

Colby Nielsen
Executive Director/General Manager

Jennifer Dumar
Development Director

Ed Roper
Bear Basin Nordic Center Director

Preston Woods
LSH Operations & Events

Leesa Johnson
Program Director

BOARD MEMBERS

Mike Lamm
Board President

Joel Hellerman
Vice President

Pat Berg
Secretary

Nish Weiseth
Board Member

Amy Holm
Board Member

Tor Anderson
Board Member

Dear Friends of Payette Lakes Ski Club,

We are merely a reflection of the light that shone so bright from our community over the past year. The board and staff of Payette Lakes Ski Club wish to thank you for all the support in helping us make the best community winter recreation facilities possible.

Amid a global pandemic, we were able to move forward on our capital campaign project ultimately installing a new T-bar and replacing existing ski run lights at Little Ski Hill. This project was completed on time and under budget to boot! It took three years and tons of community support to get us through the first phase of this project. Now our goal is to focus on the lights portion of the campaign. We are aiming to complete the Phase 3 projects of additional ski run lighting in the summer of 2022.

With an increase of uphill capacity of over 300 skiers per hour, we got our new lift just in time for the busy season. We welcomed many new faces to both of our facilities. We met lots of new families who just moved to the area, and many new visitors who finally decided to stop in after driving by for years.

We know last season was unique, but the upward trend in skier visits is making us set our sights on additional parking at both Bear Basin and Little Ski Hill. Safety is a top priority for us, and it is time for PLSC to accommodate more vehicles in addition to seeking transportation alternatives.

Growth is on everyone's mind now and our goal is to develop with this growth and improve our beloved community facilities. Among all the new faces we saw last year, we were reminded daily of who our operation is for, our community. We were able to provide a much-needed recreational outlet for our community. It helped brighten everyone's spirits to spend an afternoon on the hill or a morning on the trails. We recognize the importance of physical activity, and as we looked around the full parking lots, we saw you, our community enjoying and appreciating the special thing we have at Little Ski Hill and Bear Basin.

Colby Nielsen
PLSC Executive Director



OUR MISSION

is to provide affordable, accessible, and sustainable winter recreation facilities which maintain a full spectrum of programs for the community while reducing any financial barriers to participation.

GOALS:

- Never Turn a Child Away
- Expand Winter Activities
- Sustainability for Future Generations

LIFT. LIGHTS. LITTLE HILL.

UPDATED PROJECT BUDGET

PHASE 1 Lift Replacemen (complete) ✓	\$930,000
PHASE 1 Maintenance Building (complete) ✓	\$100,000
PHASE 2 Light Replacement (complete) ✓	\$170,000
Total Raised to Date	\$1,200,000

PHASE 3 Lighting Expansion	\$650,000
Race Run	\$170,000
Outback Terrain Park	\$350,000
Engineering, SWPPP, & Contingency	\$150,000
Phase 3 Parking Lot Expansion	\$350,000

TOTAL ESTIMATED PROJECT BUDGET: \$2,200,000

in partnership with:



THANK YOU TO ALL OF OUR DONORS

LEAD GIFTS \$15,000 or GREATER

Anonymous (1)
Albertson Family Foundation
The Allen Family
The Daniels Family
The Laidlaw Family
Laura Moore Cunningham Foundation
McCall LOT Funds
Richard J Sabala Foundation

MAJOR GIFTS FROM \$5,000 – \$14,999

Anonymous (3)
Stokli & Osha Ashcraft
Batchelor Realty
Doug & Nancy Dammrose
The DeLuna Family
Jim & Alicia Harrison
The Maciaszek Family
Ron & Mary Nahas
Jean Odmark
Payette Lakes Ski Patrol
Ed & Erin Roper
Roper Family Foundation
St. Luke's Health System
In Memory of Jürgen Hawkins
In Memory of Mack Miller

SUPPORTING GIFTS FROM \$1,000 - \$4,999

Pat & Kim Allen
The Berg Family
Peyton Christo
The Dumar Family
The Hurlbutt Family
The Klind, Arbach, Miller Holm Families
Warren & Connie Kline
Krahn's Home Furnishings
Dean & Deb Martens

McCall Association of Realtors
John & Paula McCarvel
Paul & Jackie Miller
Sally Nutt
Old Town Market
Salmon River Brewery
Bill & Betty Weida
Tom & Edie Welty

GOLDEN SKI SOCIETY

\$11,543.73 Raised by this elite group of committed and sustaining supporters during the 20/21FY.

DOUBLE ELITE

Jason "The Dude" Ventress

SMOOTH OPERATORS

Tom & Edie Welty
The Laidlaw Family

EASY RIDERS

Dan & Lisa Ostermiller
Nicole & Brandon Youkstetter
Sadie Noah Real Estate
Post Well Drilling

MEMBER SPOTLIGHT: JASON VENTRESS



It's critical for us to serve to keep the legacy of The Little Ski Hill an ongoing promise for generations of kids to come. Not just as a steppingstone for kids who have gone through the program to "teach and give back," but to be a role model.

2021 AFTER SCHOOL SKI & SNOWBOARD PROGRAM

Programming through a pandemic. *Our Greatest Impact*



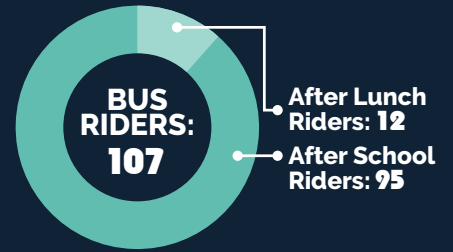
189 TOTAL PARTICIPANTS

After School Program: **167**

Saturday Program: **22**

DEMOGRAPHICS

New to Program: **40**
 Returning to Program: **149**
 Caucasian Participants: **173** Native American: **2**
 Hispanic/Latinx: **9** Pacific Islander: **2**
 African American: **1** Participants Two or More Races: **1**
 Asian American: **1**



AT START OF 2021 PROGRAM:

GRADUATING 2021 PROGRAM:



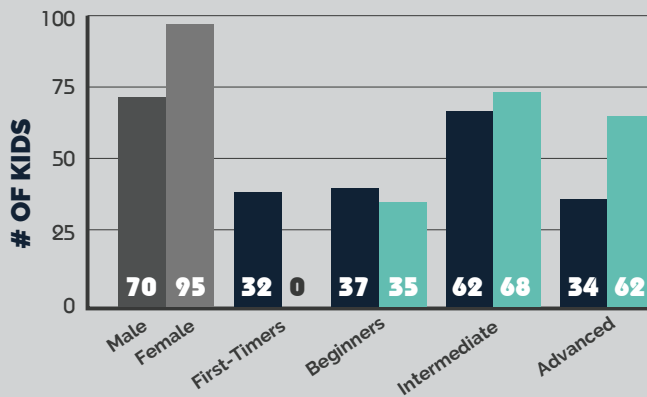
MALE:



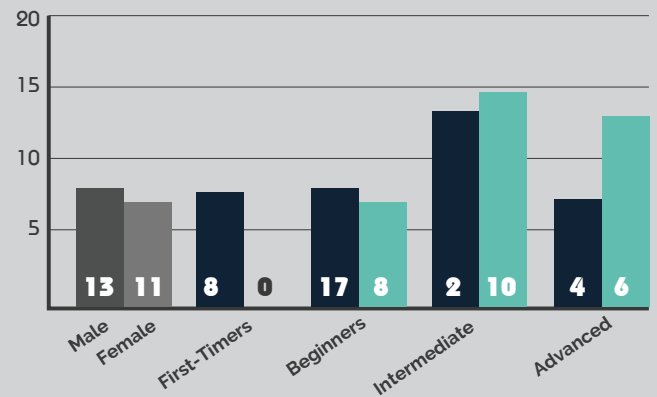
FEMALE:



SKIERS: 165 TOTAL



SNOWBOARDERS: 24 TOTAL



INSTRUCTORS

ASP: **44** Saturday Program: **9**
 Paid: **25** Volunteer: **28**
 Snowboard: **6** Middle-Schoolers: **20**
 Ski: **38** High-Schoolers: **24**
 Lodge: **24**
 On Snow: **8** **32 Parent Volunteers**



SCHOLARSHIPS

Last season, in the midst of the Covid-19 pandemic, PLSC was able to award every family seeking tuition assistance with a FULL scholarship. Valued at **\$350/child**

22 Number of Participants Receiving Financial Assistance through the Sponsor A Skier Scholarship Fund

\$7,175 Scholarship \$\$ Awarded in 2021

AFTER SCHOOL PROGRAM SUCCESS DELIVERED IN PARTNERSHIP WITH:

Share Winter Foundation
 Laura Moore Cunningham Foundation
 Meadows Valley Benefit Tournament (The Fosdick)

Rotary Club of McCall
 City of Donnelly LOT Funds
 Perc H Shelton & Gladys A Pospisil Shelton Foundation Advised Fund

GET INVOLVED: PARTICIPATE-VOLUNTEER-SPONSOR-DONATE



2021 SPONSOR SPOTLIGHT



ABOUT THE GOLDEN SKI SOCIETY:

We committed to become a Golden Ski Society member because we want to make sure the After School Program stays going for many years to come. We support the program because it provides an opportunity for all kids in our community the chance to learn how to ski, no matter what their financial situation is.

ABOUT BECOMING A PLSC EVENT SPONSOR:

We truly believe in the way the After School Program has kids learning from their peers, and then allowing the kids a chance to come back and teach future kids. These are life skills that will last forever! Our daughter loves the After School Program!



BEAR BASIN NORDIC CENTER

A 2020/2021 Season Recap by Bear Basin Director, Ed Roper

A single big snowstorm in mid-November started the earliest Nordic ski season at Bear Basin in many years, and the skiers were ready for it! The snow continued to build and ticket sales increased thru the season making for a record-breaking year of skiers and snowshoers. During most of February there was close to five feet of snow blanketing Bear Basin. I believe PLSC completed more days of grooming last winter than any other year since Bear Basin opened almost 15 years ago.

Now as the first cool nights hit us in McCall, my thoughts are drawn to the coming season. I am excited that the Ski Club has purchased both a new snowmobile and Ginzu drag for grooming. This upgrade represents a continued investment in quality grooming. All of this is possible by the great support of the skiers and snowshoers who come out and enjoy this special place we have. I look forward to seeing everyone out on the snow at Bear Basin soon.

14 INSTRUCTORS

126 PRIVATE LESSONS

52 SKATE SKI LESSONS

74 CLASSIC SKI LESSONS

(No Saturday Groups lessons were held last winter due to Covid-19 protocols)



VOLUNTEER SPOTLIGHT

SUE LOVELACE
Bear Basin Ambassador

"Volunteering at Bear Basin gives me the chance to meet new friends who also love to ski, and help first-time visitors plan their perfect loop."

2021 FRIENDS OF THE CLUB

DIAMOND SPONSOR



Aspen Flat
CONSTRUCTION

PLATINUM SPONSORS

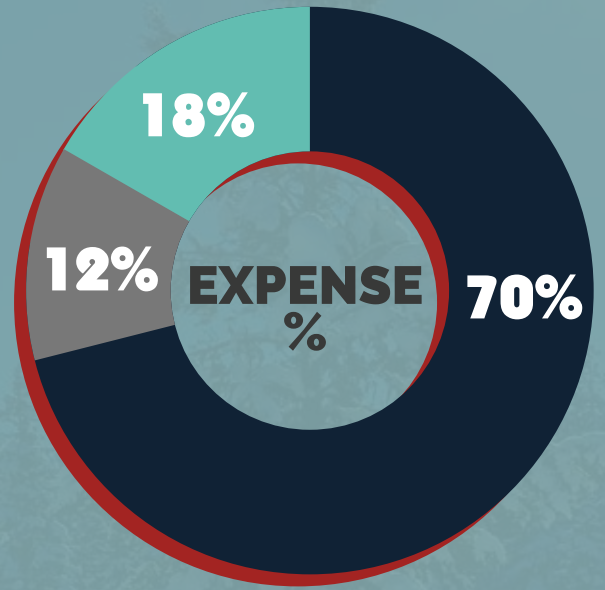
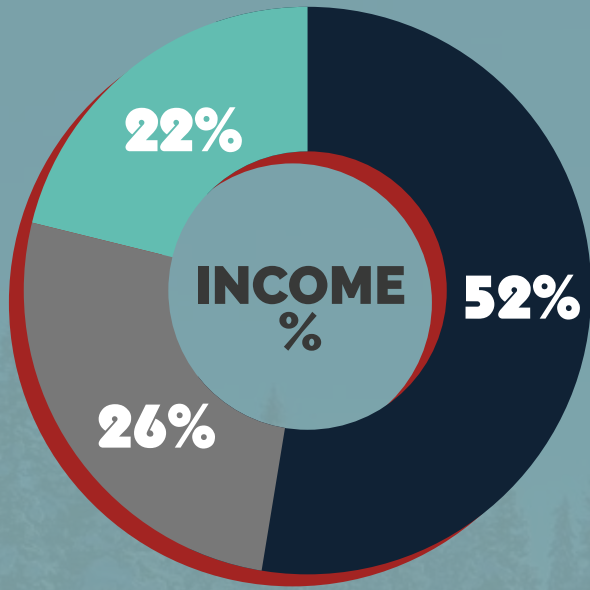


GOLD SPONSORS

McCall Party Rentals



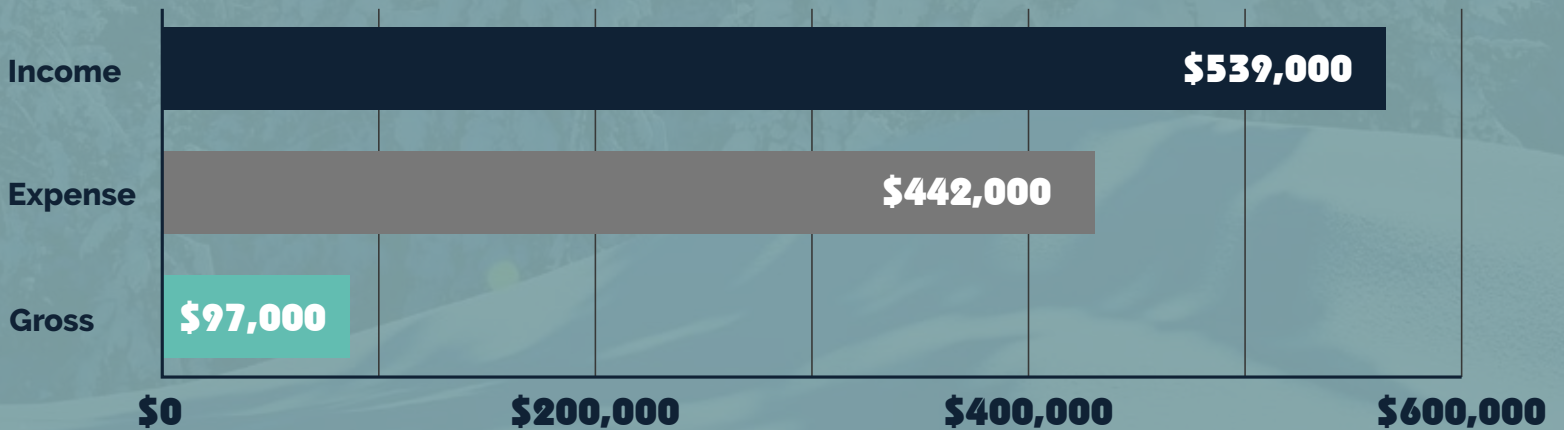
2020/2021 CONSOLIDATED FINANCIALS*



Program Revenue
 Fundraising
 Grants

Operating Expense
 Admin
 Fundraising

P&L SNAPSHOT*



*These numbers do not include capital campaign income or expense.



BECOME A SUSTAINING MEMBER

Sustaining Members set up monthly donations; giving PLSC a reliable resource we can count on over time, and helping us focus on what's really important....getting more community members outside during the winter months.



GUIDESTAR SEAL OF TRANSPARENCY:

Our organization earned a 2021 Gold Seal of Transparency! Now, everyone can view our financial details and learn about the people at our organization. Check out our updated #NonprofitProfile on Candid: PAYETTE LAKES SKI CLUB INC - GuideStar Profile [guidestar.org/profile/82-0153504](https://www.guidestar.org/profile/82-0153504)



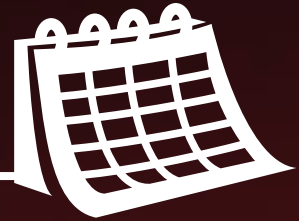
P.O. Box 442
McCall, ID 83638

208.634.5691
info@littleskihill.org
littleskihill.org



TO:

LOOKING AHEAD



❄️ 21/22 PLSC SEASON PASSES ON SALE
October 1st, 2021

❄️ SKI SWAP at PAYETTE LAKES MIDDLE SCHOOL
October 22nd, 23rd, 24th, 2021

❄️ HAUNTED LODGE at LITTLE SKI HILL LODGE
October 30th, 2021 | 5-9PM | \$5 per person

❄️ THE SNOW BALL
December 4th, 2021 | 5PM

❄️ 2022 AFTER SCHOOL SKI + SNOWBOARD PROGRAMS
January - February 2022

❄️ LSH TOWN RACE LEAGUE
February - March 2022 | Registration Opens January 1st 2022

